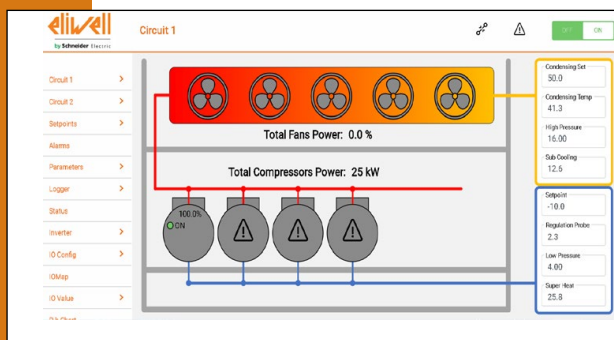
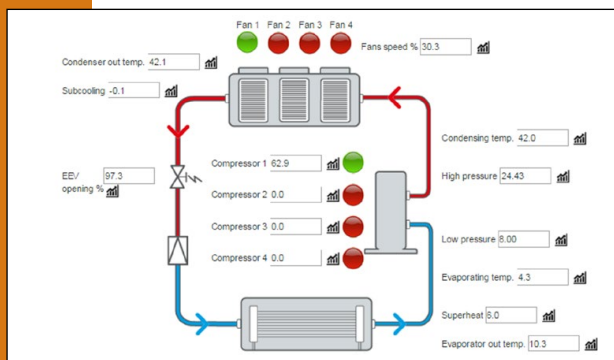
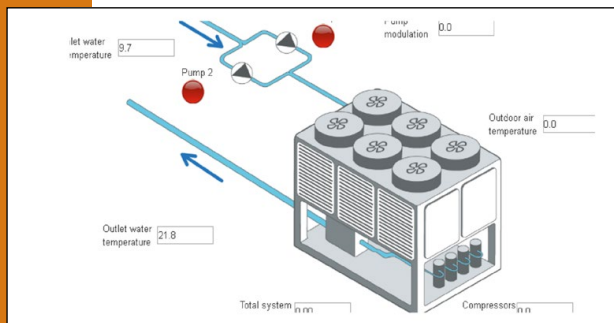


UNIVERSAL CONTROL FOR CHILLER 2 CIRCUITS

HOTELS | SHOPPING CENTERS | OFFICE BUILDINGS | HOSPITALS | PUBLIC BUILDINGS | INDUSTRIES



> DESCRIPTION

Controller for chiller with heat pump possibility with up to 2 circuits with 6 compressors per circuit with configuration wizard.

> APPLICATIONS

Multi-purpose control for both old and new chillers installed in hotels, commercial buildings, office buildings, hospitals, and public buildings, as well as in industries.



> FUNCTIONS

- **Circuit demand** can be **distributed** in saturation or balancing.
- Each circuit can be managed by VEE or by solenoid.
- **Pump-down** management.
- Configurable regulation by supply and return temperature or suction pressure sensor.
- Compressors can be: **On/off, with up to 4 capacities**, with inverter, screw, CRII or digital scroll.
- Common or independent condenser, managed by temperature or pressure.
- **Modulating or 6-step fans**.
- Modulating or **floating fan control**.
- Control of **1 or 2 pumps**, 1 inverter or all nothing.
- **Defrost by resistances** or cycle inversion.
- **Defrost by independent or synchronous circuit** with defrost start and stop probe.
- **Up to 20 time slots** for defrost start.
- **COP calculation** by electrical and thermal consumption according to the compressor flow according to its data sheet.
- Easily adjustable **heat recovery**.
- **Free cooling** can be developed according to customer's request.
- **Schedule configuration** from web page or HMI.
- **Connectivity and IoT** by:
 - Modbus RTU/TCP
 - Bacnet profile ACC (IP o MS/TP)
 - Webserver
 - TCP/RTU bridge for maintenance
 - FTP server
- Logging of variables and alarms **micro SD card**.
- Logging can be exported via **USB or webserver**.

WEBSERVER
AVAILABLE



TOUCH HMI
AVAILABLE (AVP)



TELEVIS GO DRIVER
AVAILABLE

